

MODELS VS REALITY: CLIMATE-COVID PUBLIC POLICY DISASTERS



Michelle Stirling © 2022

Climate & Covid: Meeting the "Return to Freedom" Challenge

April 22-23, 2022

Calgary

COVID MODELS

From Hero to Zero



Staff at a car-manufacturing plant in Wuhan, China, observe social-distancing measures during their lunch break.

MODELLING THE PANDEMIC

The simulations driving the world's response to COVID-19. **By David Adam**

had a day off since mid-January.”

Research does not get much more policy-relevant than this. When updated data in the Imperial team's model¹ indicated that the United Kingdom's health service would soon be overwhelmed with severe cases of COVID-19, and might face more than 500,000 deaths if the government took no action, Prime Minister Boris Johnson almost immediately announced stringent new restrictions on people's movements. The same model suggested that, with no action, the United States might face 2.2 million deaths; it was shared with the White House and new guidance on social distancing quickly followed (see 'Simulation shock').

Governments across the world are relying on mathematical projections to help guide decisions in this pandemic. Computer simulations

“We’re building simplified representations of reality. Models are not crystal balls.”



UK epidemiologist Neil Ferguson.

<https://www.nature.com/articles/d41586-020-01003-6>

APRIL 2020 HERO

A screenshot of a Business Insider article. The header shows the Business Insider logo and navigation links. The article title is "How 'Professor Lockdown' helped save tens of thousands of lives worldwide — and carried COVID-19 into Downing Street". The author is Bill Bostock, dated Apr 25, 2020, 1:21 AM. The main image shows Neil Ferguson speaking, with a white box overlaid containing the text: "Figure 9: Impact of non-pharmaceutical interventions (NPIs) to reduce COVID-19 mortality and healthcare demand". Below the image is a caption: "Professor Neil Ferguson, head of the department of infectious disease epidemiology at Imperial College London. J-IDEA; Ruobing Su/Business Insider".

INSIDER

HOME > SCIENCE

How 'Professor Lockdown' helped save tens of thousands of lives worldwide — and carried COVID-19 into Downing Street

Bill Bostock Apr 25, 2020, 1:21 AM

Figure 9: Impact of non-pharmaceutical interventions (NPIs) to reduce COVID-19 mortality and healthcare demand

Professor Neil Ferguson, head of the department of infectious disease epidemiology at Imperial College London. J-IDEA; Ruobing Su/Business Insider

- Ferguson's team warned Boris Johnson that the quest for "herd immunity" could cost 510,000 lives, prompting an abrupt U-turn.
- His simulations have been influential in other countries as well, cited by authorities in the US, Germany, and France.

<https://www.businessinsider.com/neil-ferguson-transformed-uk-covid-response-oxford-challenge-imperial-model-2020-4>

'Professor Lockdown' Modeler Resigns in Disgrace



Epidemiologist Neil Ferguson speaks at a news conference in London, England, January 22, 2020. (Reuters TV)

By JOHN FUND
May 6, 2020 4:52 PM

Listen to article ▶

<https://www.nationalreview.com/corner/professor-lockdown-modeler-resigns-in-disgrace/>

ZERO

HOME > SCIENCE

Elon Musk called one of the world's top lockdown advocates an 'utter tool' who does 'absurdly fake science' after he was caught breaking his own rules to meet his lover

Bill Bostock May 6, 2020, 3:13 AM



Neil Ferguson and Elon Musk. JIDEA/Reuters

<https://www.businessinsider.com/elon-musk-prof-neil-ferguson-resigned-moron-absurdly-fake-science-2020-5>

Imperial Folly: Neil Ferguson Has No Qualification in Biological Sciences

FEBRUARY 25, 2021 BY NEWS WIRE 14 COMMENTS



This is undoubtedly one of the most extraordinary stories of the entire 'global pandemic' which has turned the world upside down over the twelve months.

<https://21stcenturywire.com/2021/02/25/imperial-folly-neil-ferguson-has-no-qualification-in-biological-sciences/>



For businesses

Industry partnerships and commercialisation Imperial Business Partners Incubator Imperial Tech Foresight Advanced Hackspace

Industry partnerships and commercialisation

Industry partnerships

Featured partnerships

ABB

Agilent

Agrii

AstraZeneca

AWE

Bayer

Blockchain

BP

DLA Piper

Dyson

Eli Lilly

GlaxoSmithKline

HeartFlow

Home / Administration and support services / Enterprise / For businesses / Industry partnerships and commercialisation / Industry partnerships / Featured partnerships

Featured partnerships

- [ABB](#)
- [Agilent](#)
- [Agrii](#)
- [AstraZeneca](#)
- [AWE](#)
- [Bayer](#)
- [Blockchain](#)
- [BP](#)
- [DLA Piper](#)
- [Dyson](#)
- [Eli Lilly](#)
- [GlaxoSmithKline](#)

- [HeartFlow](#)
- [Heptares](#)
- [Hudl](#)
- [Jaguar Land Rover](#)
- [Jaywing](#)
- [Johnson & Johnson](#)
- [Kaesler Nutrition](#)
- [Multiwave Technologies AG](#)
- [Mitsubishi Heavy Industries](#)
- [NEC](#)
- [Nestlé](#)

- [P&G](#)
- [PETRONAS](#)
- [Pfizer](#)
- [Plato Partnership](#)
- [Quinbrook Infrastructure Partners](#)
- [Saudi Aramco](#)
- [Shell-Imperial AIMS Centre](#)
- [Shell and Qatar Petroleum](#)
- [Shionogi](#)
- [Smith and Nephew](#)
- [Syngenta](#)
- [Thomson Ecology](#)
- [Thomson Reuters](#)
- [Vodafone Foundation](#)

No model, no matter how accurate its epidemiologic assumptions, can illuminate or predict the secondary and tertiary effects of particular disease mitigation measures. Nor, for example, can it assess the potential effects of high absentee rates resulting from home or regional quarantine on the functioning integrity of essential services, such as hospital care or provision of food and electrical service to the community. *If particular measures are applied for many weeks or months, the long-term or cumulative second- and third-order effects could be devastating socially and economically.*

In brief, models can play a contributory role in thinking through possible mitigation measures, but they cannot be more than an ancillary aid in deciding policy.

BIOSECURITY AND BIOTERRORISM: BIODEFENSE STRATEGY, PRACTICE, AND SCIENCE
Volume 4, Number 4, 2006
© Mary Ann Liebert, Inc.

Disease Mitigation Measures in the Control of Pandemic Influenza

THOMAS V. INGLESBY, JENNIFER B. NUZZO, TARA O'TOOLE, and D. A. HENDERSON

The threat of an influenza pandemic has alarmed countries around the globe and given rise to an intense interest in disease mitigation measures. This article reviews what is known about the effectiveness and practical feasibility of a range of actions that might be taken in attempts to lessen the number of cases and deaths resulting from an influenza pandemic. The article also discusses potential adverse second- and third-order effects of mitigation actions that decision makers must take into account. Finally, the article summarizes the authors' judgments of the likely effectiveness and likely adverse consequences of the range of disease mitigation measures and suggests priorities and practical actions to be taken.

<https://citeseerx.ist.psu.edu/viewdoc/download?doi=10.1.1.556.2672&rep=rep1&type=pdf#:~:text=Possible%20measures%20that%20have%20been,social%20gatherings%2C%20school%20clo%2D%20sures>

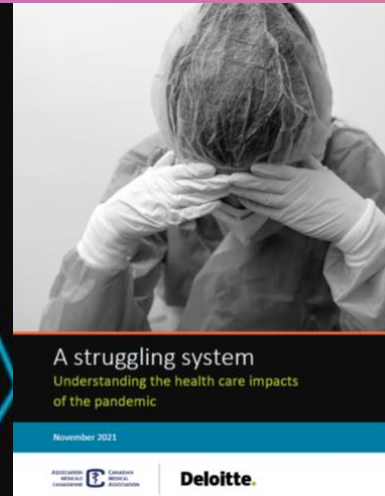
DESPITE KNOWING THIS – DESTRUCTIVE LOCKDOWNS PROCEEDED

- It is difficult to identify circumstances in the past half-century when large-scale quarantine has been effectively used in the control of any disease. **The negative consequences of large-scale quarantine are so extreme** (forced confinement of sick people with the well; complete restriction of movement of large populations; difficulty in getting critical supplies, medicines, and food to people inside the quarantine zone) **that this mitigation measure should be eliminated from serious consideration.**

MODELER HAD BEEN WRONG BEFORE

- *Ferguson was behind the disputed research ...on 2001 outbreak of foot-and-mouth disease. He also predicted that up to 150,000 people could die. There were fewer than 200 deaths. . . .*
- *In 2002, Ferguson predicted that up to 50,000 people would likely die from exposure to BSE (mad cow disease) in beef. In the U.K., there were only 177 deaths from BSE.*
- *In 2005, Ferguson predicted that up to 150 million people could be killed from bird flu. In the end, only 282 people died worldwide from the disease between 2003 and 2009.*
- *In 2009, a government estimate, based on Ferguson's advice, said a "reasonable worst-case scenario" was that the swine flu would lead to 65,000 British deaths. In the end, swine flu killed 457 people in the U.K.*
- *Last March, Ferguson admitted that his Imperial College model of the COVID-19 disease was based on undocumented, 13-year-old computer code that was intended to be used for a feared influenza pandemic, rather than a coronavirus. Ferguson declined to release his original code so other scientists could check his results. He only released a heavily revised set of code last week, after a six-week delay.*
- *So the real scandal is: Why did anyone ever listen to this guy?*

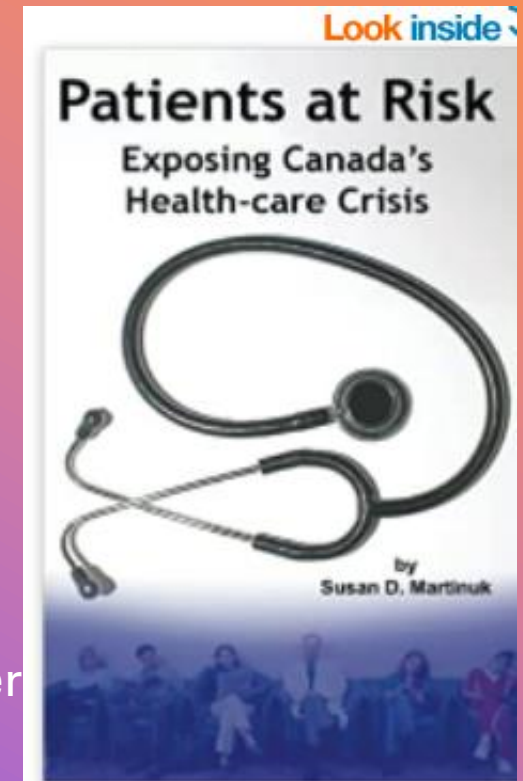
DEADLY + PAINFUL CONSEQUENCES FOR MILLIONS



The CMA-Deloitte report does some accounting of the 'unintended' consequences of lockdowns.

These numbers simply exacerbate the cruel reality for many patients in Canada documented by Susan Martinuk.

Canada has been rationing health care from the start. Universal health care was never financially viable. You never had a choice.



NET ZERO HEALTH CARE – MAID4YOU



In comparison [to COVID response], the task of transforming healthcare culture and practice to halve healthcare emissions by 2030 as recommended by the Intergovernmental Panel on Climate Change¹ seems entirely feasible.

<https://www.bmj.com/content/374/bmj.n1323>

Health Care is said to generate 5% of global GHGs

GREEN RECOVERY

Net zero healthcare: a call for clinician action

Health professionals are well positioned to effect change by reshaping individual practice, influencing healthcare organisations, and setting clinical standards, argue **Jodi Sherman and colleagues**

Achieving net zero emissions in healthcare will be possible only with radical and immediate engagement of the clinical community. The covid-19 pandemic has served as a wake-up call for high income health systems that resources are finite and globally interdependent, vulnerable to massive surges in demands and simultaneous infrastructure disruption, and that inequities in access to care threaten health and wellbeing for everyone. During the first months of the pandemic, the medical community united at a historic pace, rapidly sharing information, redesigning models of care, conserving and innovating resources, and moving towards a circular economy. In comparison, the task of transforming healthcare culture and practice to halve healthcare emissions by 2030 as recommended by the Intergovernmental Panel on Climate Change¹ seems entirely feasible.

Planetary healthcare
Planetary healthcare requires embracing an expanded notion of the principle “first do no harm,” beyond care for individual patients to a duty to protect the Earth’s natural systems on which intergenerational health and wellbeing depend.² This planetary health lens acknowledges crucial links between ecological change, human health, and our ability to thrive.²

Planetary accountability encompasses actions taken by individual health professionals within the clinical setting, collective actions of clinicians in healthcare organisations with the communities they serve, and interactions of individuals and collectives in professional societies with regulatory and oversight bodies. For clinicians, this means recognising that healthcare consumes finite resources and produces harmful pollution, accepting that environmental stewardship is integral to our fundamental duty of care, and that we are quickly approaching a climate tipping point.

Healthcare is one of the largest polluting industries, responsible for nearly 5% of total global greenhouse gases.³ Like all industries, healthcare must rapidly and substantially reduce its greenhouse gas emissions to avoid the most catastrophic outcomes to health and wellbeing from climate change.

Achieving net zero emissions—that is, reducing carbon output until it is in balance with natural and engineered means of absorption—necessitates optimising the efficiency and environmental performance of healthcare delivery. However, these alone are insufficient. We must also work to reduce the incidence and severity of disease to decrease the amount and intensity of care required. Furthermore, we must

strands of action: reducing emissions from healthcare services, matching supply and demand, and reducing demand for healthcare.⁴ Here we provide practical suggestions to help clinicians enact that framework (table 1).

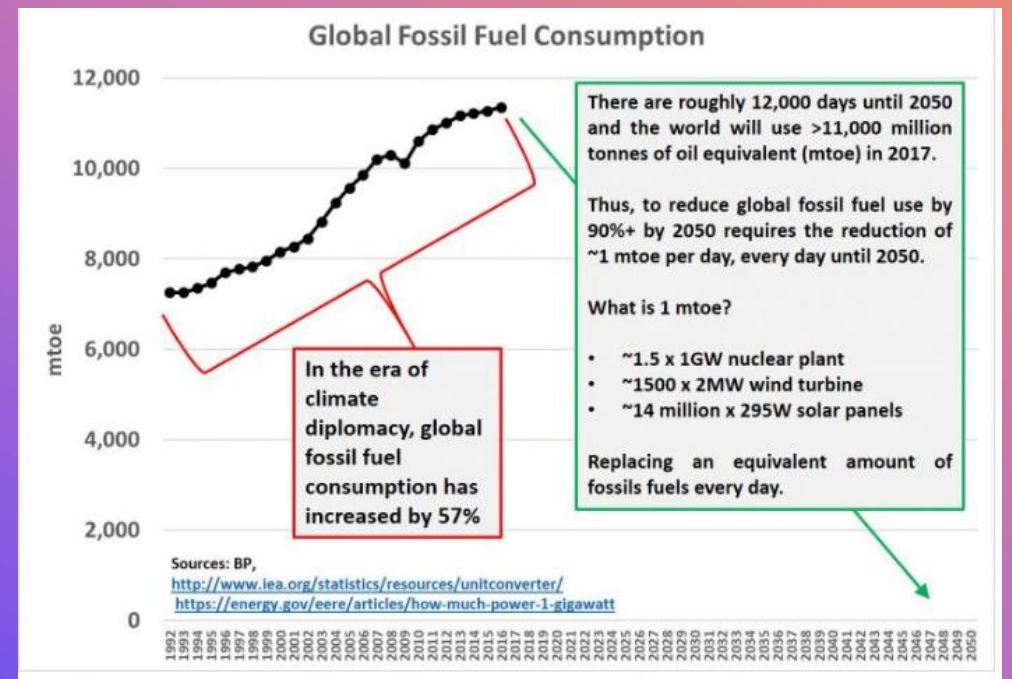
Reducing emissions from supply of health services
Reducing emissions from healthcare services encompasses all activities that consume materials and energy. Most healthcare sustainability initiatives focus on large scale facility operations, such as improving hospital energy performance and sourcing renewable electricity, which typically are not under the control of clinicians. However, clinicians influence building use through decisions on care settings—for example, whether to administer monitoring or treatment in the home, clinic, or hospital (which has the highest resource and emissions intensity).⁵ Virtual care for patient-provider interactions that do not require in-person examination reduces travel and clinic emissions, obviating the need for some clinical spaces, as seen in the covid-19 pandemic.

Coordination between care providers, such as through arranging multidisciplinary consultations and services on the same day, and proximal diagnostic testing, can further minimise emissions from patient travel. Such changes often require reorganisation of processes and commitment, which can be hindered by lack of understanding of the need for

KEY RECOMMENDATIONS

- Clinicians must work to reduce the incidence and severity of disease to decrease the amount and intensity of care required

BMJ: first published as 10.1136/bmj.n1323 on 20 September 2021. Downloaded from <http://www.bmj.com/> on 29 December 2021



MODELLING IN CLIMATE SCIENCE

"In climate research and modelling, we should recognize that we are dealing with a coupled non-linear chaotic system, and therefore that long-term prediction of future climate states is not possible."

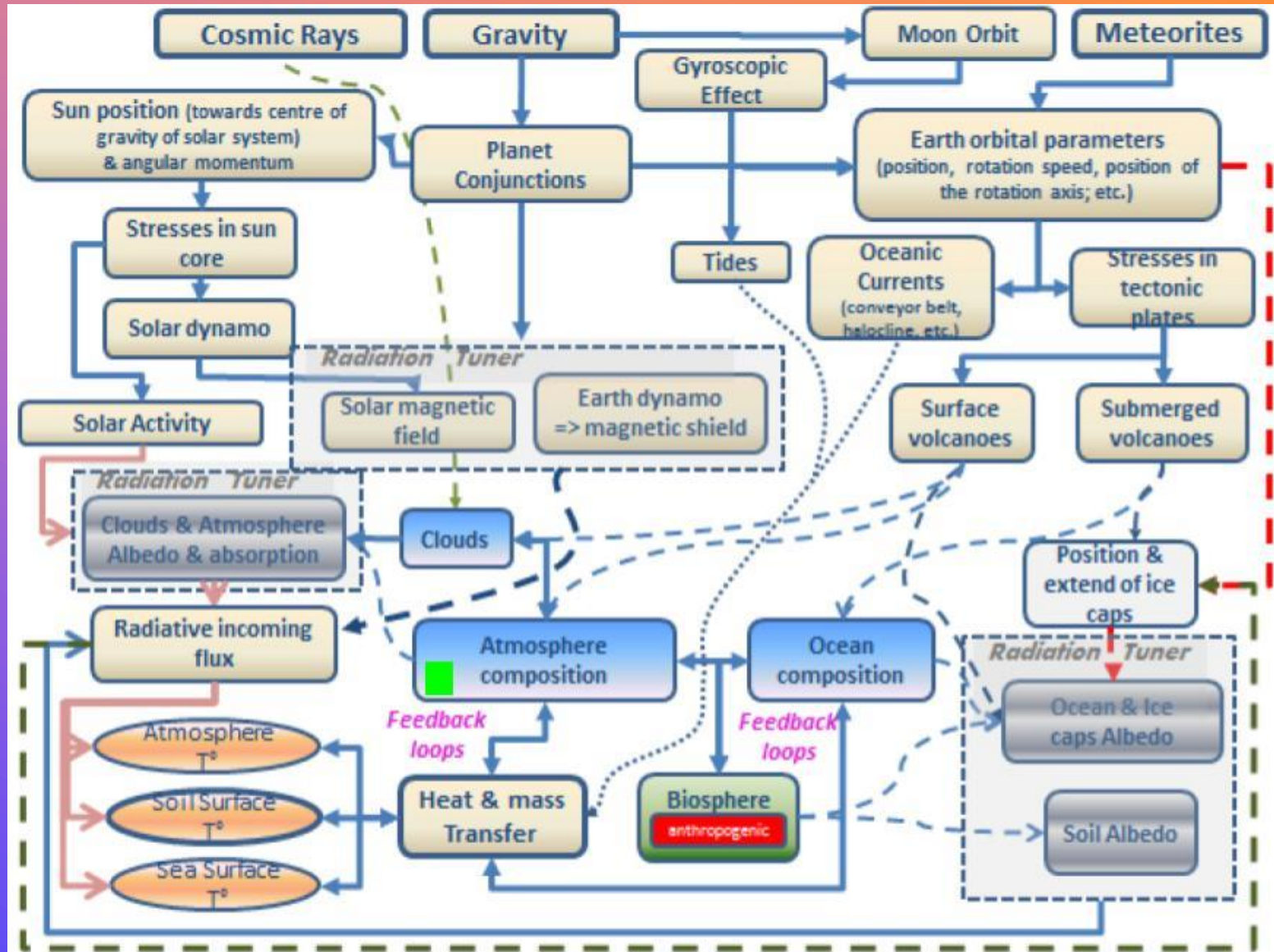
**~ The Intergovernmental Panel on Climate Change ~
(IPCC)**

Third Assessment Report (2001)

Section 14.2.2.2, page 774

CHAOTIC NON- LINEAR SYSTEM

Henri Masson
<https://www.portoconference2018.org/>
 (Note: green dot added)



CLIMATE MODELS PROJECT 2 TO 3 TIMES THE OBSERVED WARMING

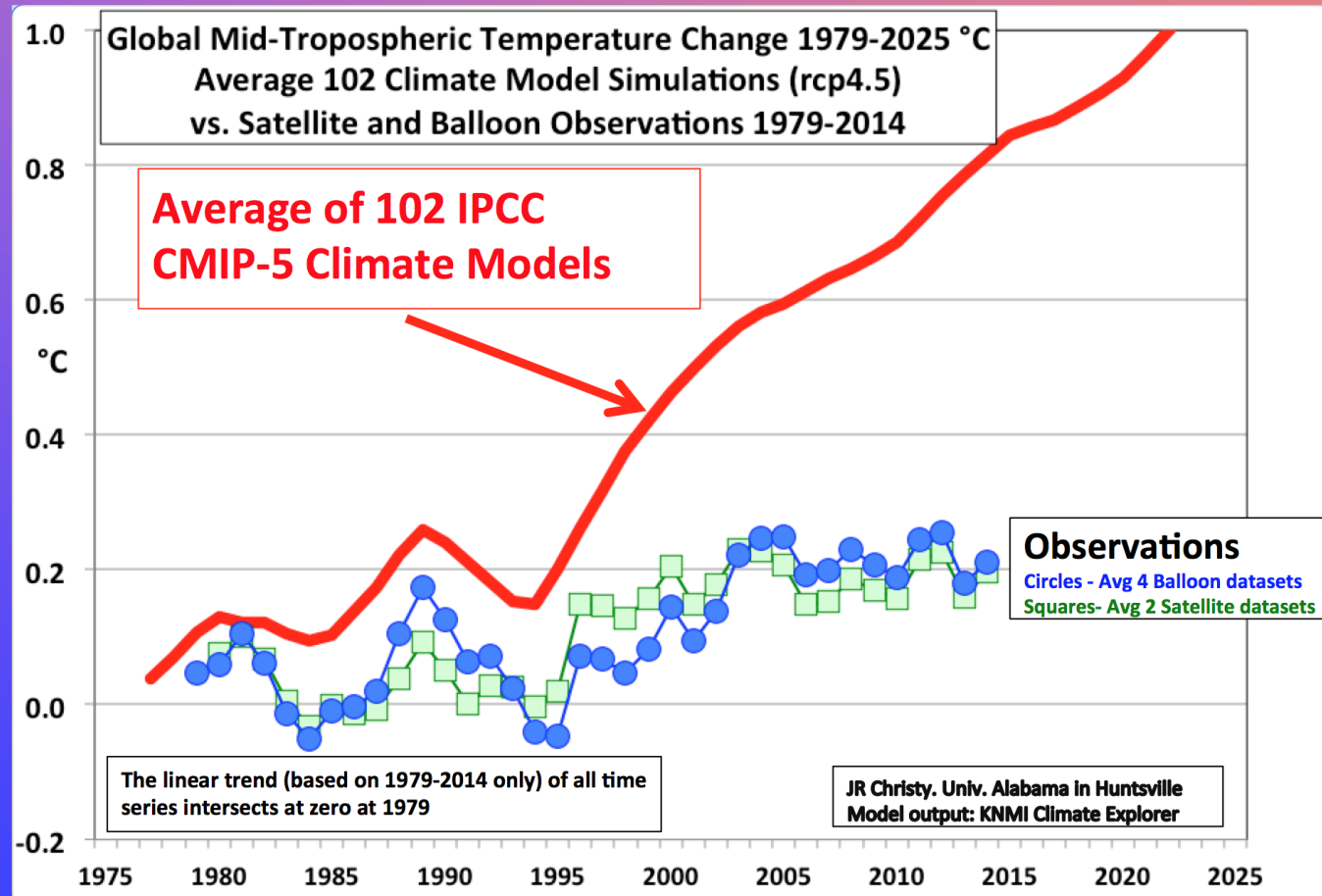
The video player shows a presentation slide with a bar chart titled "Very Latest IPCC CMIP-6 Model Runs – no improvement in 2019" and "Tropical 300-200 1979-2014 Trends CMIP-6 Historical Runs °C/decade (22 Apr)". The chart compares observed warming (around 0.12°C/decade) with various model runs. The Canada model is highlighted with a red box, showing a projection of approximately 0.6°C/decade. Other models shown include UK, China, Japan, France, and Europe (to 2007).

Category	Value (°C/decade)
Observations	0.12
Mean	0.38
NASA	0.43
NCAR	0.27
Canada	0.60
UK	0.50
China	0.27
Japan	0.38
France	0.28
Europe (to 2007)	0.38

Confronter au réel les affirmations sur le climat (en)
70 views
Association des Climato-réalistes
Published on May 21, 2019
SUBSCRIBE 399

<https://www.youtube.com/watch?v=l8hdE3eZ6vs&feature=youtu.be>

MODELLING IN CLIMATE SCIENCE

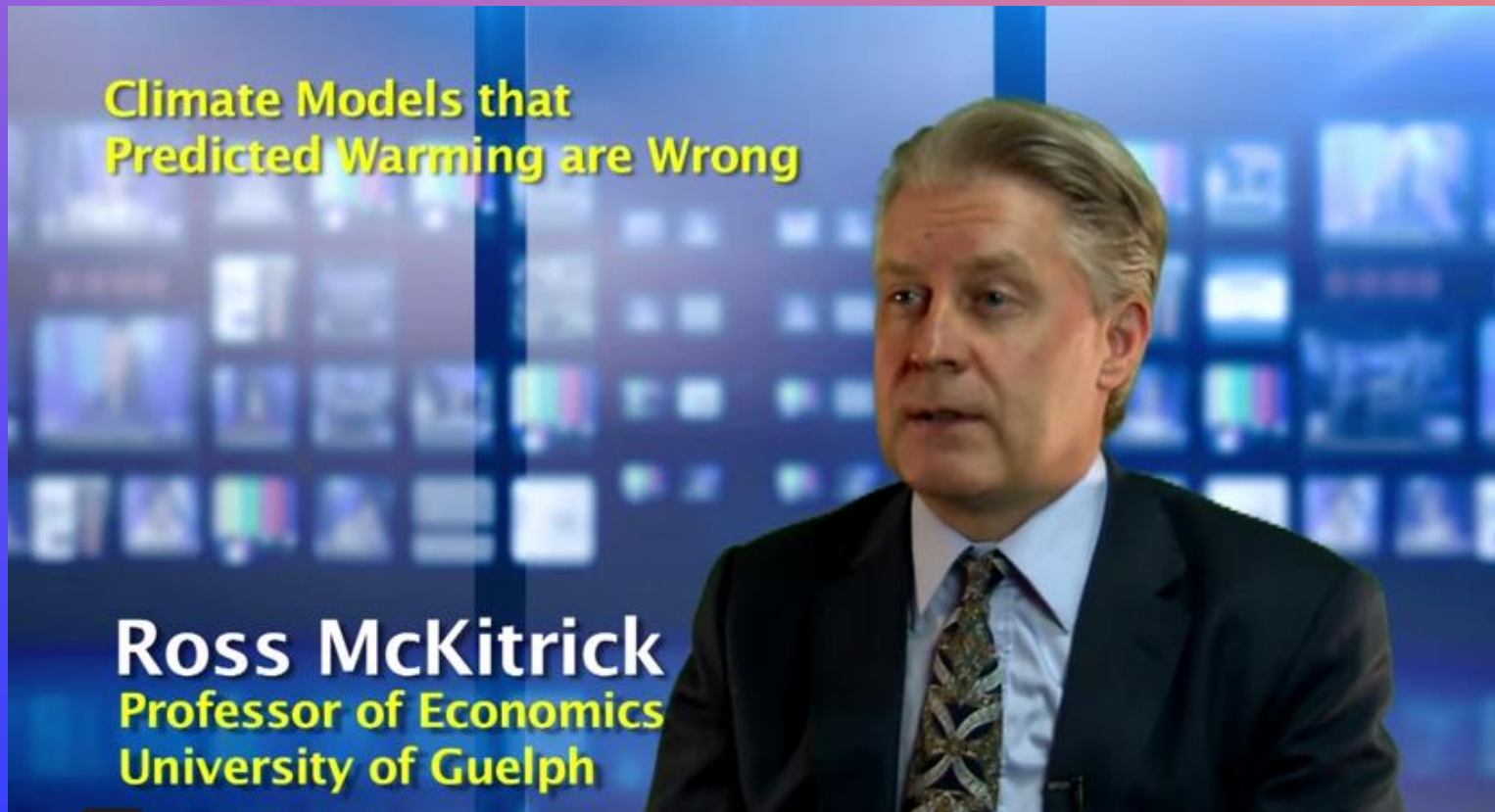


A special prize goes to the Canadian model! “We draw attention to the CanESM5 model: it simulates the greatest warming in the troposphere, roughly 7 times larger than the observed trends.” The Canadian government relies on the CanESM models “to provide science-based quantitative information to inform climate change adaptation and mitigation in Canada and internationally.” (2020)

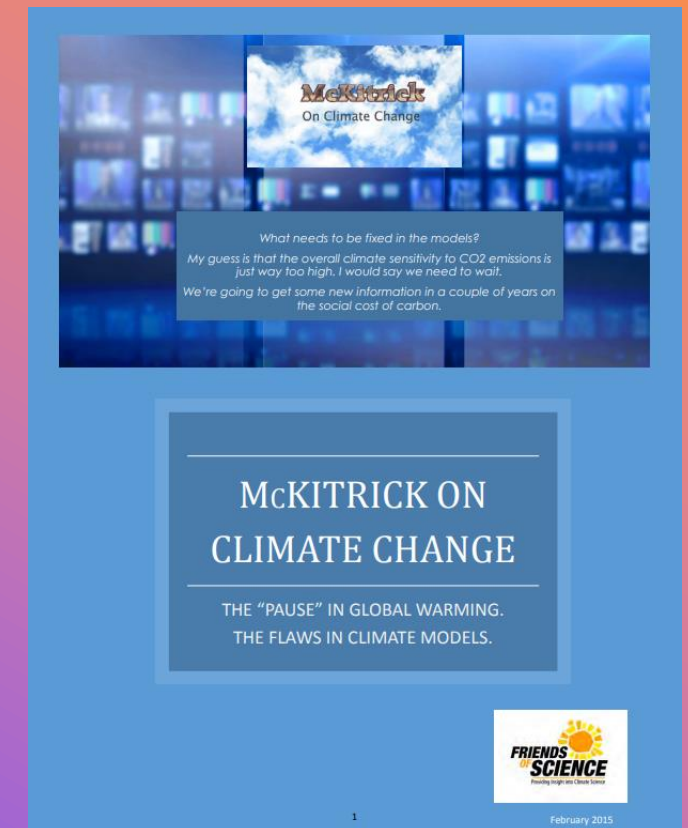
<https://judithcurry.com/2020/08/25/new-confirmation-that-climate-models-overstate-atmospheric-warming/>

<https://docs.house.gov/meetings/SY/SY00/20160202/104399/HHRG-114-SY00-Wstate-ChristyJ-20160202.pdf>
(2017)

CARBON TAXES (SOCIAL COST OF CARBON) ARE CALIBRATED TO CLIMATE MODELS



<https://youtu.be/g30JfQIK6GA>



https://friendsofscience.org/assets/documents/McKittrick_Climate_Change_SCC_Feb_14_2015.pdf

DISASTROUS CONFLUENCE OF REALITY

- **WAR**

- Climate policy of the West and Germany has created the opportunity for Putin's war with Ukraine

- <https://blog.friendsofscience.org/2022/03/02/the-war-in-ukraine-reveals-the-failure-of-the-german-energy-strategy-and-therefore-of-the-eu/>

- **DEBT**

- The federal government budgetary deficit rose from \$5.6 billion in 2018-2019 to \$312.4 billion in 2020-2021, an increase of 5479%.
- The total interest-bearing debt of the federal government rose from \$1.02 trillion in 2018-2019 to \$1.44 trillion in 2020-2021. A one per cent increase in interest rates would add \$14.4 billion to annual federal debt servicing charges.
- **BALLONING HEALTH COSTS – LACK OF ACCESS – COVID BACKLOG**
- In 2019, our so-called free health-care costs were expected to amount to \$264 billion, or \$7,069/every Canadian. (Martinuk 2019)

UNFUNDED PENSION LIABILITIES – UNATTRACTIVE INVESTMENT CLIMATE

- Put simply, the aging of Canada's population has resulted in large and growing unfunded liabilities. The funding shortfall is estimated at \$792.3 billion for the CPP, \$494.4 billion for OAS, and \$894.7 billion for medicare. Together the unfunded liabilities in Canada's public pensions and health care programs total \$2.2 trillion or \$134,841 for each income taxpayer.

• <https://www.fraserinstitute.org/article/243000-bill-courtesy-canadas-governments#:~:text=Together%20the%20unfunded%20liabilities%20in,half%20of%20total%20government%20liabilities.>

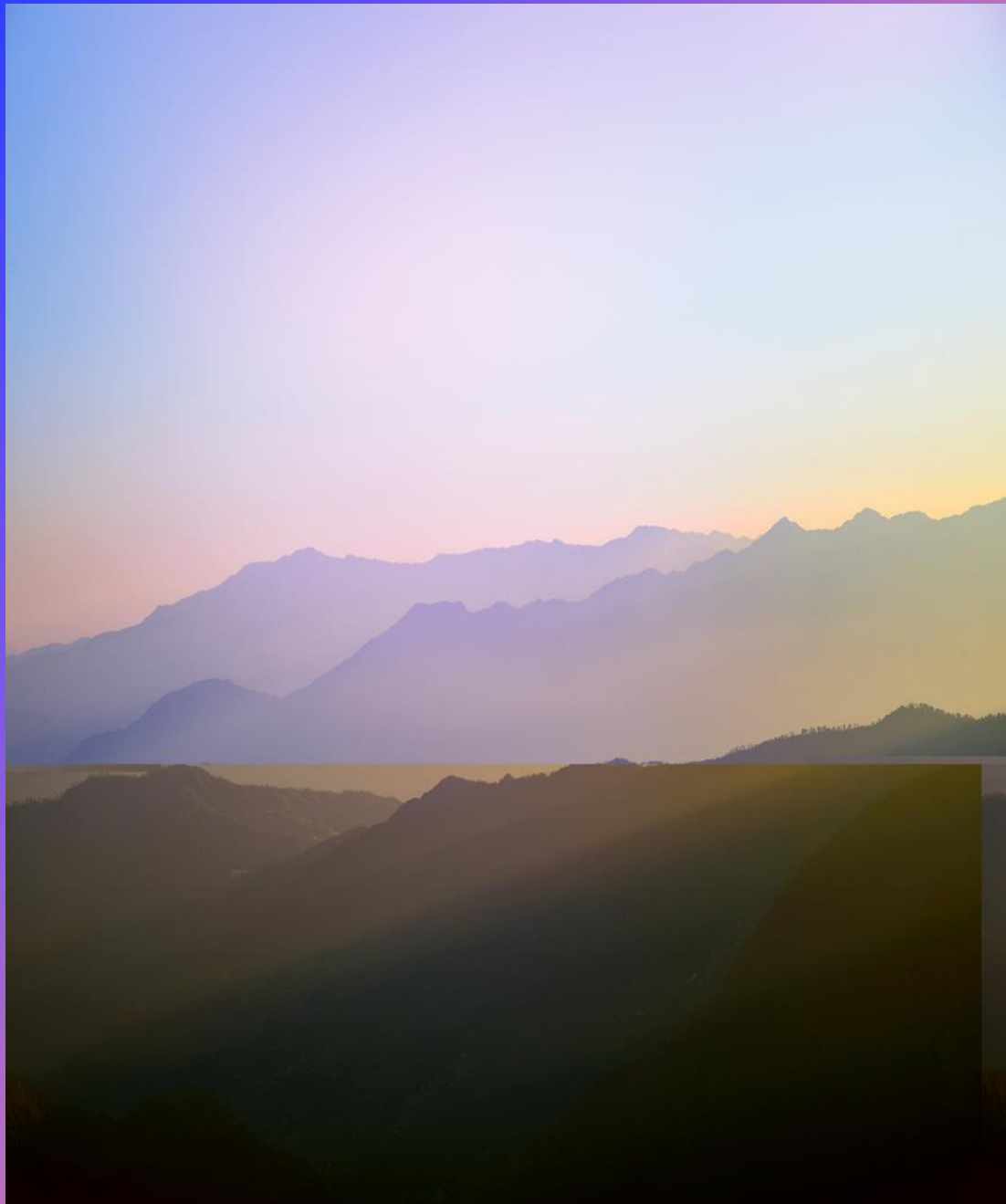
- Despite our est. \$21 TRILLION USD in resource wealth, climate policies have made Canada 'hostile' to investment <https://blog.friendsofscience.org/2021/10/20/will-we-squander-canadas-energy-resource-heritage/>

MUSINGS FROM THE OIL PATCH

PAGE 27

For an industry that operates with decades-long planning and development timetables, this hostile attitude could cause long-term damage for Canada's economy

For the federal government, its support of certain energy projects, while fighting others, has allowed itself to be positioned as both pro-energy and anti-energy. This split political personality is seen by the global energy industry as a sign Canada has evolved into a hostile location to do business. For an industry that operates with decades-long planning and development timetables, this hostile attitude could cause long-term damage for Canada's economy, and especially its western provinces where the energy industry is centered. Energy hostility will also put the mining, timber and other extractive industries on notice that their growth may soon become challenged.



Is there hope?

MAKE OUR OWN SOLUTIONS

"They live different kinds of lives outside of the city"

My biggest concern is all the people who do not live in our city. Those we lost on the way.

Those who decided that it became too much, all this technology. Those who felt obsolete and useless when robots and AI took over big parts of our jobs. Those who got upset with the political system and turned against it. They live different kind of lives outside of the city. Some have formed little self-supplying communities. Others just stayed in the empty and abandoned houses in small 19th century villages.

Once in awhile I get annoyed about the fact that I have no real privacy. No where I can go and not be registered. I know that, somewhere, everything I do, think and dream of is recorded. I just hope that nobody will use it against me. ←

All in all, it is a good life. Much better than the path we were on, where it became so clear that we could not continue with the same model of growth. We had all these terrible things happening: lifestyle diseases, climate change, the refugee crisis, environmental degradation, completely congested cities, water pollution, air pollution, social unrest and unemployment. We lost way too many people before we realised that we could do things differently.

“

Welcome to 2030.
I own nothing, have
no privacy, and
life has never been
better.

- Ida Auken, Member of Parliament, Denmark



They live other kinds of
lives outside of the city.
***Some have formed little
self-supplying
communities.***

REALITY CHECK

Canadians face a grim future. The cupboard is bare.

Health care is unsustainable as is – MAiD – Medical Assistance in Dying legislation has been eased; many people in pain will opt for that route if there are no other choices.

Perhaps the fired and rejected health care community can be reformed to serve peoples' needs at a community level. This would require overturning/challenging legislation.

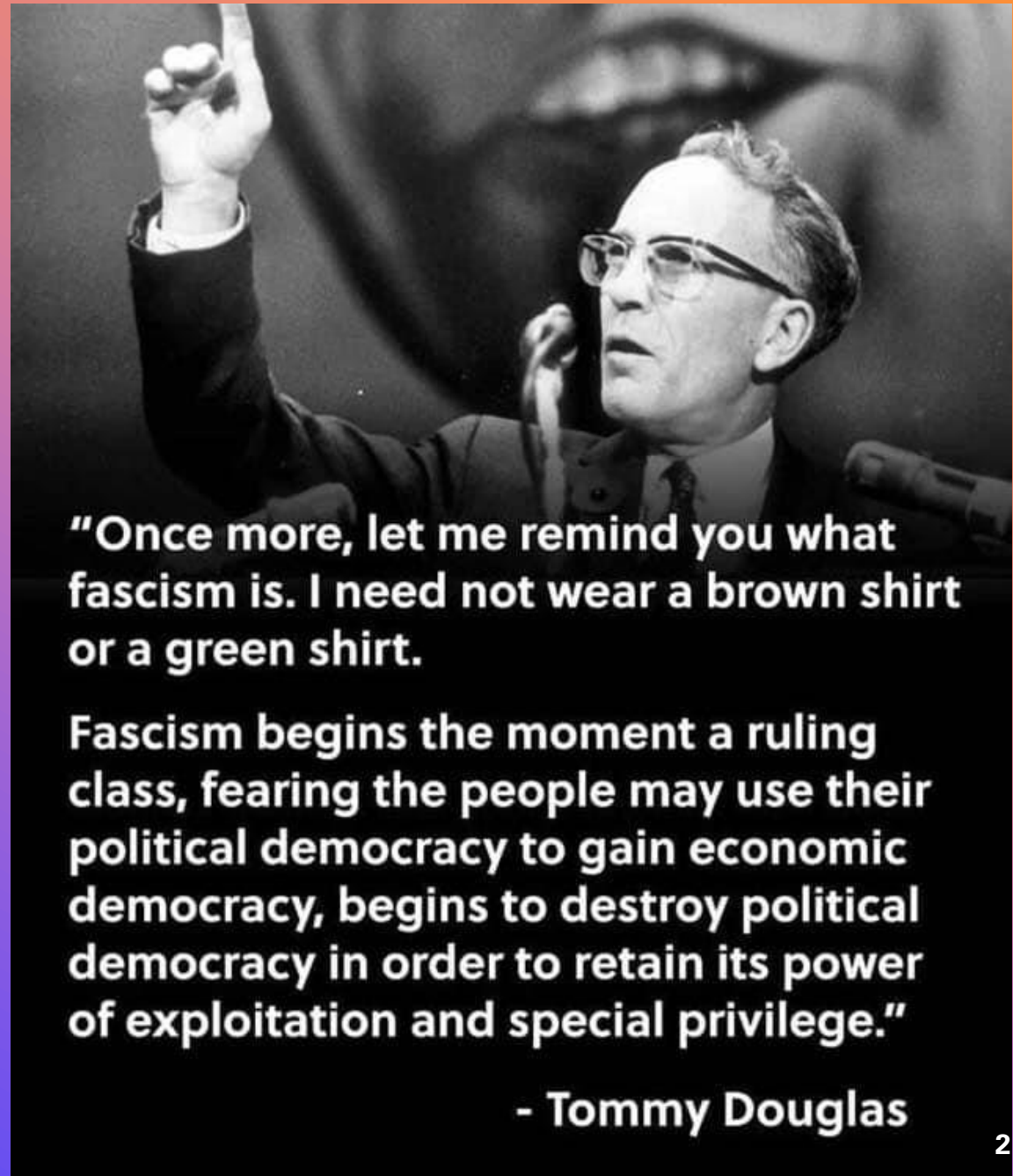
Reliance on climate models and health models and not reality have destroyed the society our ancestors built.

LET'S HOPE THIS IS NOT THE END

Thank you.

To contact Michelle Stirling:
stirlingmi2@gmail.com

<https://michellestirling.com/>



"Once more, let me remind you what fascism is. I need not wear a brown shirt or a green shirt.

Fascism begins the moment a ruling class, fearing the people may use their political democracy to gain economic democracy, begins to destroy political democracy in order to retain its power of exploitation and special privilege."

- Tommy Douglas